

ALL ON THE LINE

OHIO'S PATH TO FAIR MAPS

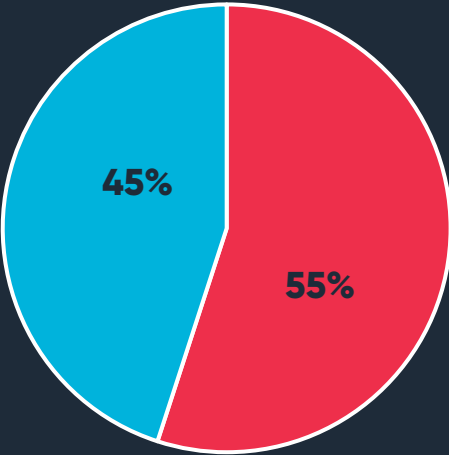
Katy Shanahan / Ohio State Director

Carrie Coisman / Digital Organizer

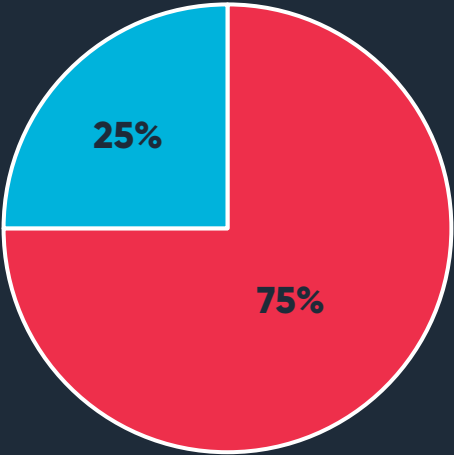
**WHAT DOES
GERRYMANDERING
LOOK LIKE IN OHIO?**

VOTING ≠ REPRESENTATION

2012-2020 Congressional Results

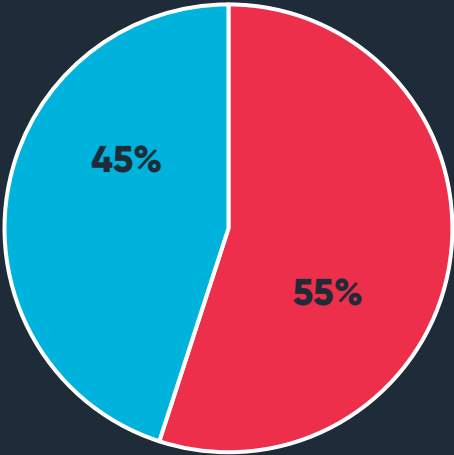


Votes

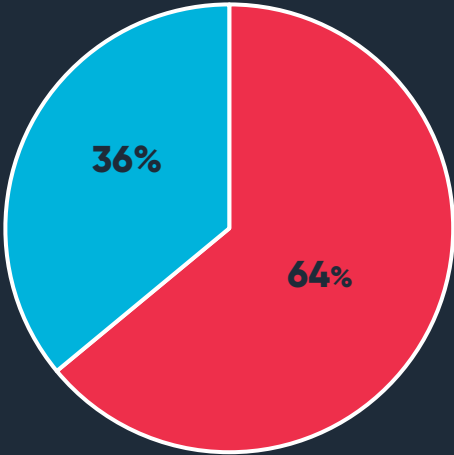


Seats

2012-2020 State House Results



Votes



Seats

**Providing access to
affordable health care.**

**Reducing the gun violence
that plagues our schools
and communities.**

Protecting voting rights.

Achieving equal pay.

**Solving the urgent threat
of climate change.**

ALL ON THE LINE

OHIO'S REDISTRICTING PROCESS

Who Runs The Maps?

- A new seven-member Redistricting Commission draws the state legislative maps
- The Ohio General Assembly and (if needed) the Redistricting Commission draw the congressional maps
- The Ohio Supreme Court has original jurisdiction (or first review) for all future legal challenges to state legislative and congressional maps

New Criteria for State Legislative and Congressional Maps

General Criteria

- Contiguity and compactness
- Bipartisan support needed for any 10-year map

Rules to Curb Community Splits

- Use existing boundaries for counties, townships, cities to help create new district lines to help keep communities together
- Where possible, districts should avoid splitting apart counties
 - Congressional rules will heavily decrease how many county splits there are
 - State House districts shouldn't be drawn to split apart counties more than once, if possible

Rules Against Partisan Gerrymandering

- For state legislative maps, no partisan gerrymandering! For congressional maps, no partisan gerrymandering for 4-year maps
- State legislative maps must have representational fairness based on the preferences of Ohio's voters – that means the seat share for Republicans and Democrats should look a lot more like the vote share they get at the ballot box

UPDATE ON THE 2020 CENSUS

Update on the Census Data

Apportionment Data: data that determines how many US House seats each state gets

- Ohio will receive this data *by* April 30, 2021 – four months later than we would have received it under normal circumstances

Redistricting Data: population and demographics data used to redraw district lines

- Ohio will receive this data by September 30, 2021 – six months later than we would have received it under normal circumstances

Impact on Ohio Redistricting Process

- Deadline challenges
- Quick map-drawing turnaround time

Redistricting Principles to Deal With Delay

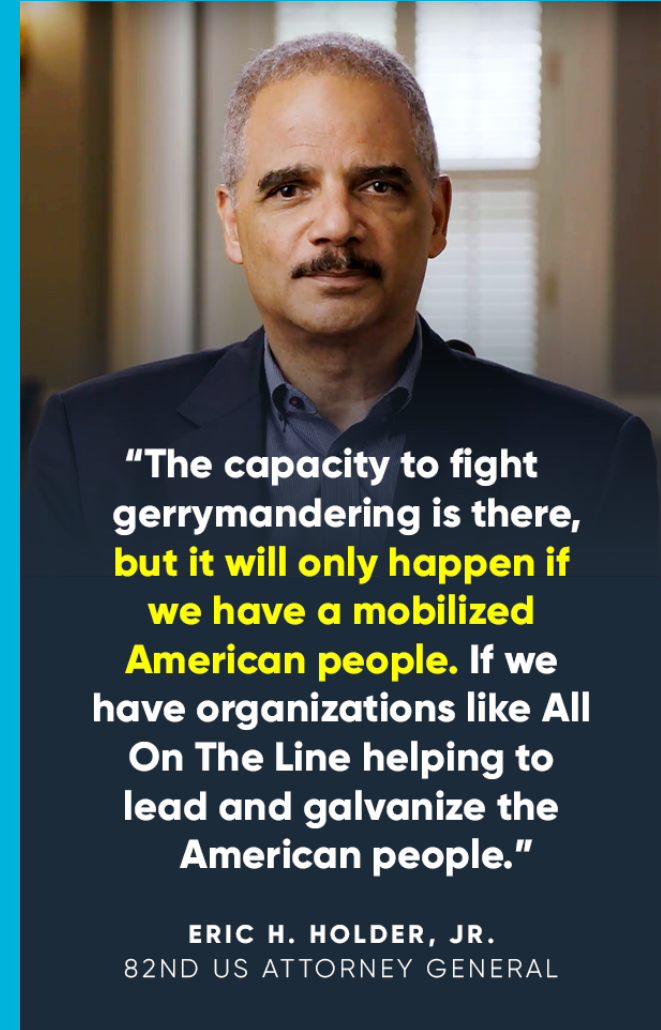
- New maps **must** be drawn for 2022 elections
- Census delay **is not** an excuse to cut corners on hosting a transparent, inclusive process that gives us fair maps
- Legislature and Redistricting Commission should get to work now – there’s no time to waste
- Any maps using non-census data may violate “one person, one vote” principle

THE PATH TO GETTING **FAIR** **MAPS** STARTS NOW

We need your help to build the grassroots infrastructure necessary to secure fair maps in 2021.

What can we do now?

- Virtual **Redistricting U** trainings
- Join our **monthly volunteer calls** (next on April 12) – sign up on Mobilize!
- Help us **demand virtual testimony for all legislative hearings**
- Use our **Letter to the Editor** tool to submit a note to your local newspaper – sign up on Mobilize!



"The capacity to fight gerrymandering is there, but it will only happen if we have a mobilized American people. If we have organizations like All On The Line helping to lead and galvanize the American people."

ERIC H. HOLDER, JR.
82ND US ATTORNEY GENERAL



THANK YOU!